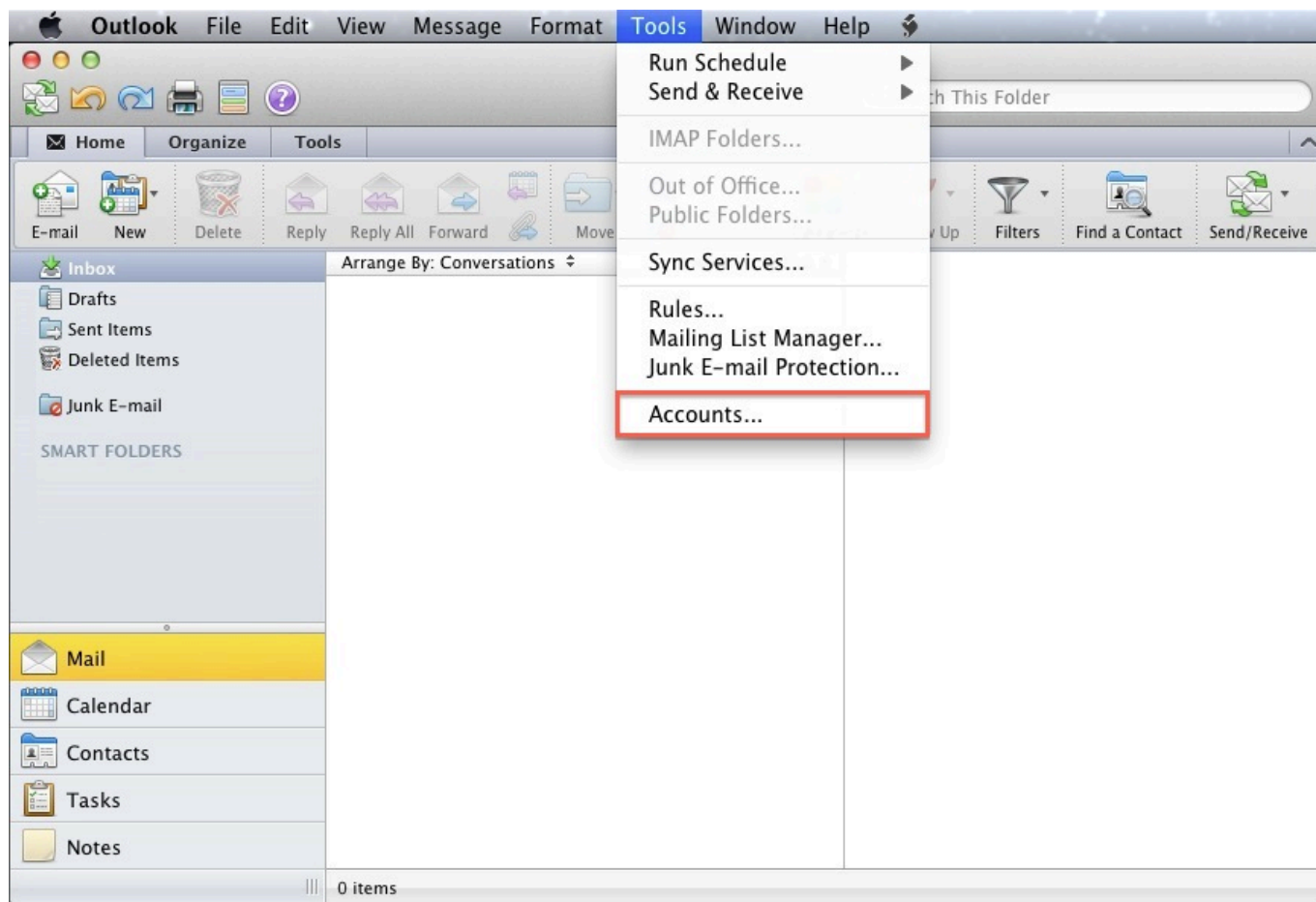


# Elektroninis paštas

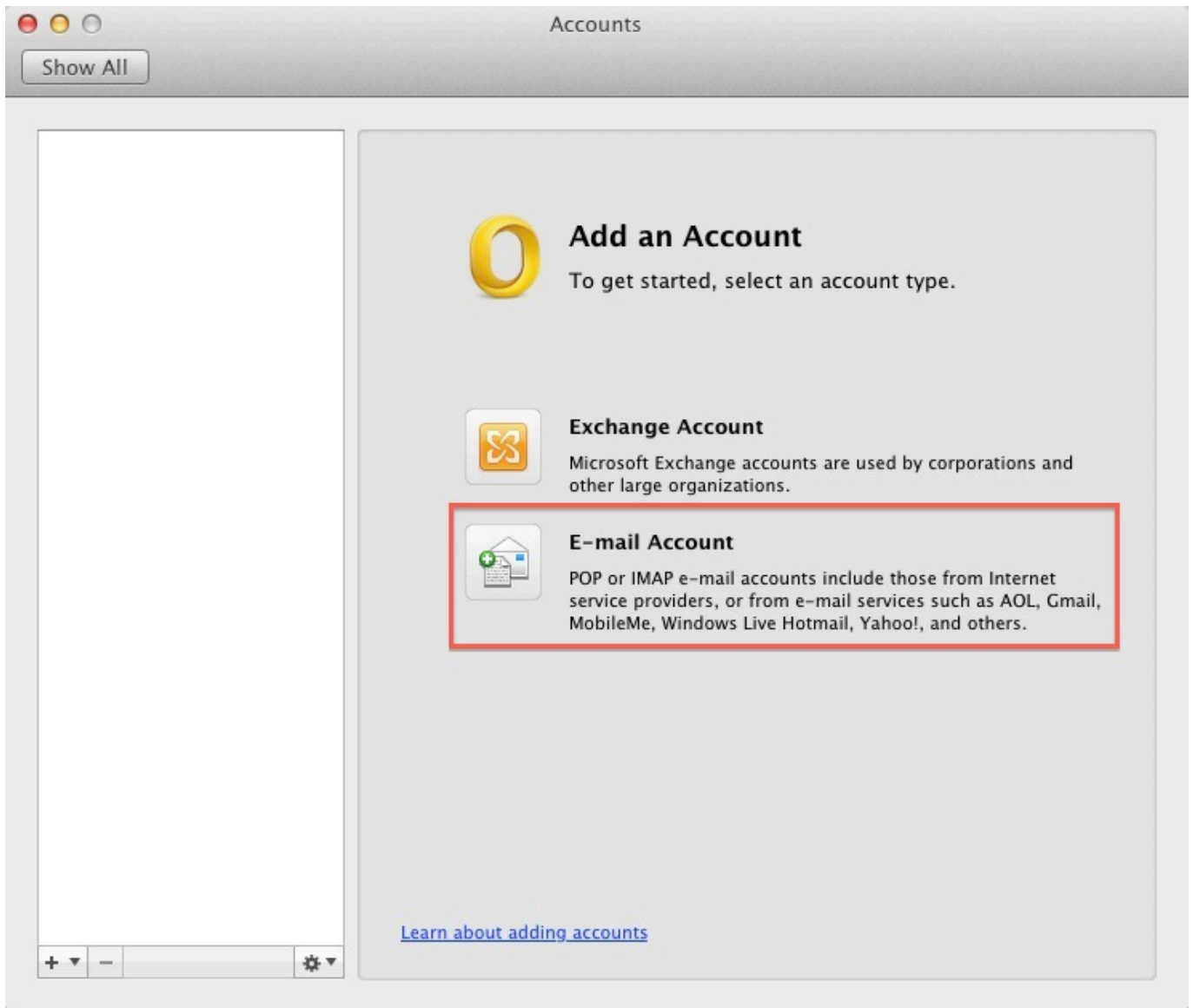
## Kaip sukonfigūruoti el. pašto dėžutę Outlook 2011 Mac kompiuteryje

1.Paspauskite **Tools** meniu ir pasirinkite **Accounts**.



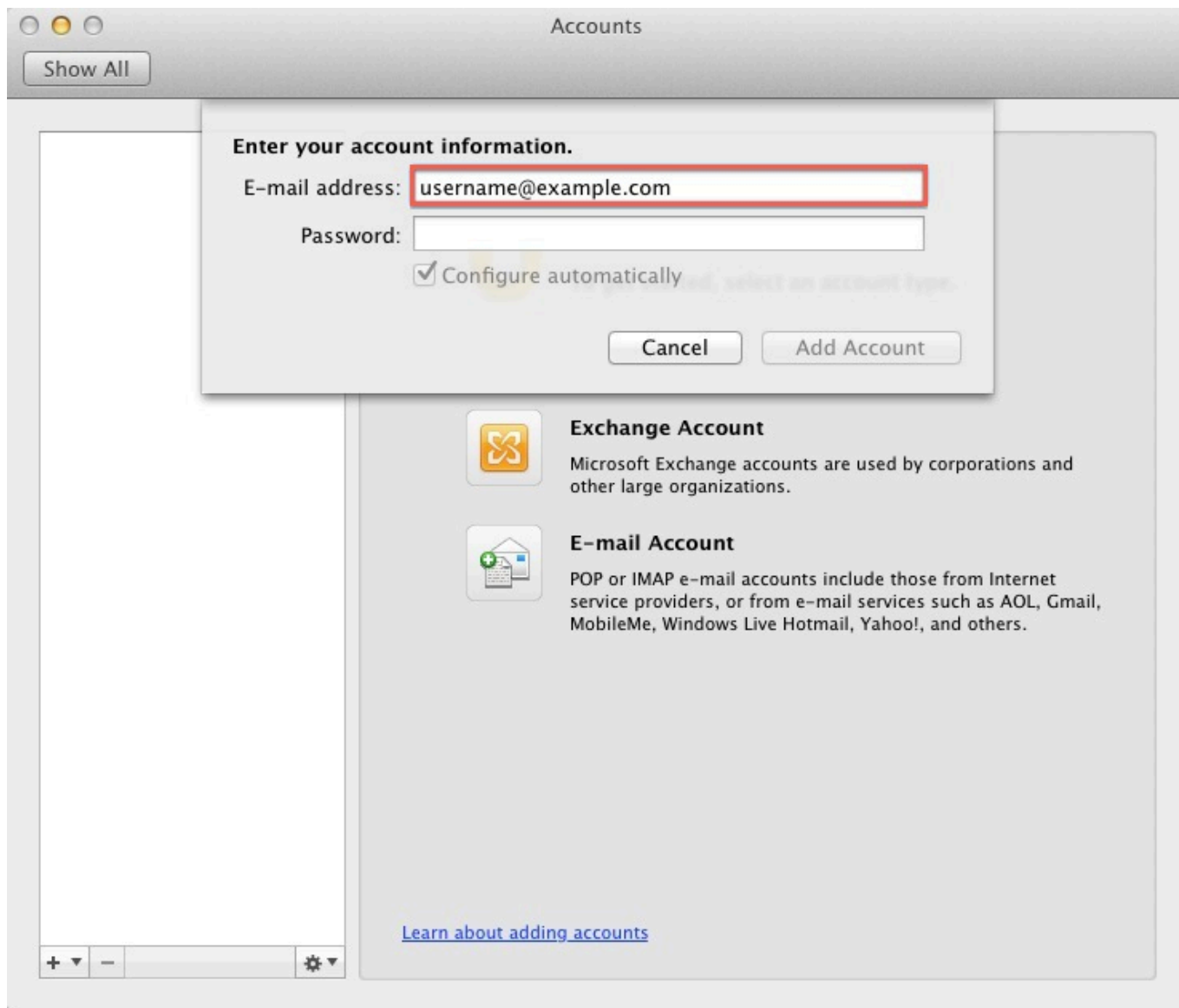
2.Paspauskite **E-mail Account**.

# Elektroninis paštas



3. Įveskite el. pašto adresą laukelyje **E-mail address**.

# Elektroninis paštas



4. Įveskite slaptažodį laukelyje **Password**.

# Elektroninis paštas

The screenshot shows the 'Accounts' window in macOS. A modal dialog box titled 'Enter your account information.' is open. It contains the following fields and options:

- E-mail address:** A text field containing 'username@example.com'.
- Password:** A text field containing ten dots, highlighted with a red border.
- Configure automatically** (disabled).
- User name:** A text field containing 'username@example.com'.
- Type:** A dropdown menu set to 'IMAP'.
- Incoming server:** A text field containing 'mail.example.com' and a port field containing '110'. Below it are two checkboxes:  'Override default port' and  'Use SSL to connect (recommended)'.
- Outgoing server:** A text field containing 'smtp.example.com' and a port field containing '587'. Below it are two checkboxes:  'Override default port' and  'Use SSL to connect (recommended)'.

At the bottom of the dialog are 'Cancel' and 'Add Account' buttons. In the background, a 'Show All' button is visible in the top-left corner of the 'Accounts' window. At the bottom of the window, there is a '+', '-', and a gear icon. A link '[Learn about adding accounts](#)' is also visible.

5. Laukelyje **User Name** įveskite el. pašto adresą.

# Elektroninis paštas

Accounts

Show All

Enter your account information.

E-mail address:

Password:

Configure automatically

User name:

Type:

Incoming server:  :

Override default port

Use SSL to connect (recommended)

Outgoing server:  :

Override default port

Use SSL to connect (recommended)

[Learn about adding accounts](#)

6. **Incoming server** laukelyje įveskite "mail." ir jūsų internetinį adresą, pvz: mail.jusuinternetinisadresas.lt

Pažymėkite **Override default port** ir įrašykite portą **110** vietoje siūlomo 143.

# Elektroninis paštas

Accounts

Show All

**Enter your account information.**

E-mail address:

Password:

Configure automatically

User name:

Type:

Incoming server:  :

Override default port

Use SSL to connect (recommended)

Outgoing server:  :

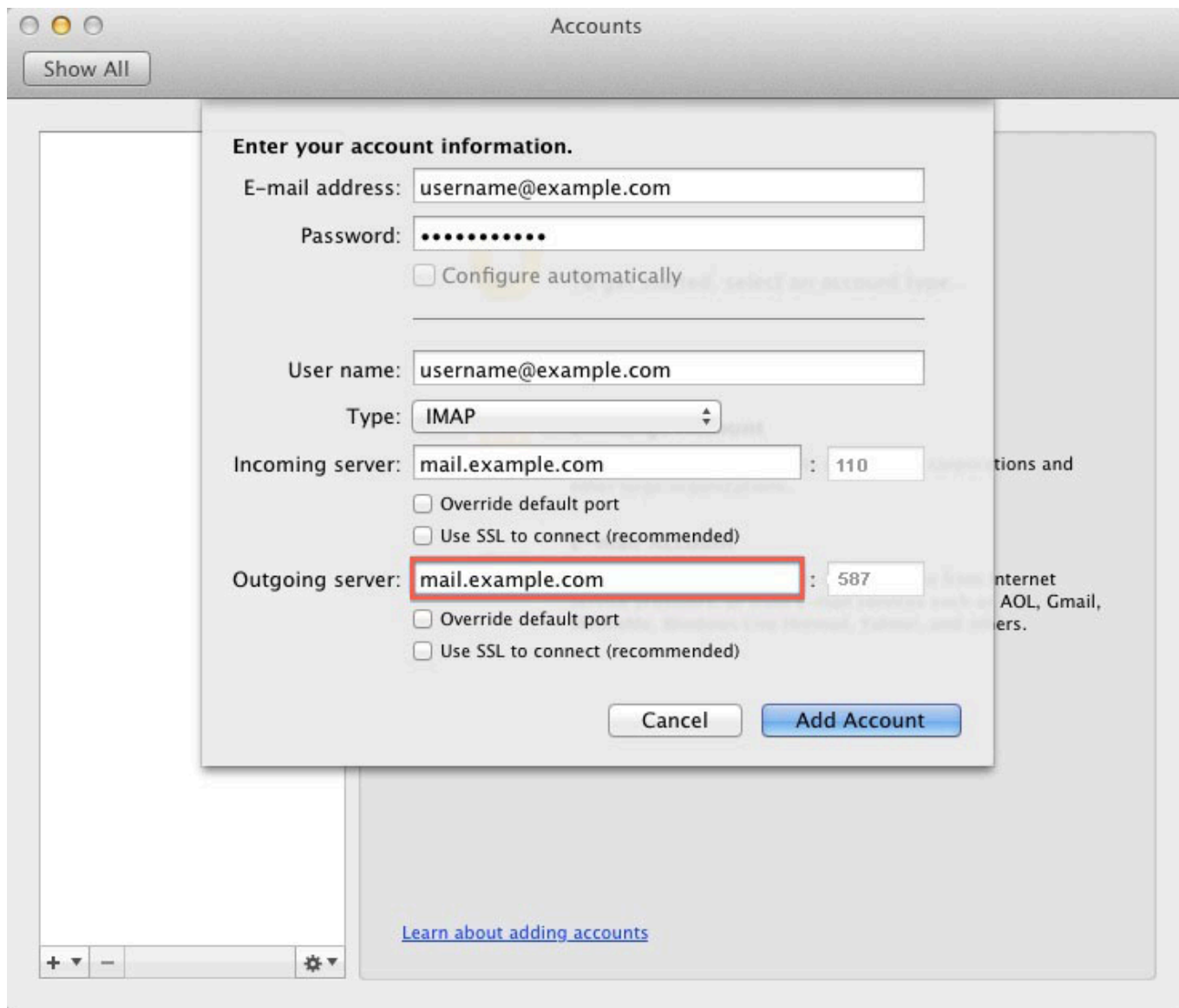
Override default port

Use SSL to connect (recommended)

[Learn about adding accounts](#)

**7.Outgoing Server** laukelyje įveskite tokį patį įrašą kaip ir **Incoming server**.

# Elektroninis paštas



8. Pažymėti **Override default port** ir įrašykite portą **587** vietoje siūlomo 25.

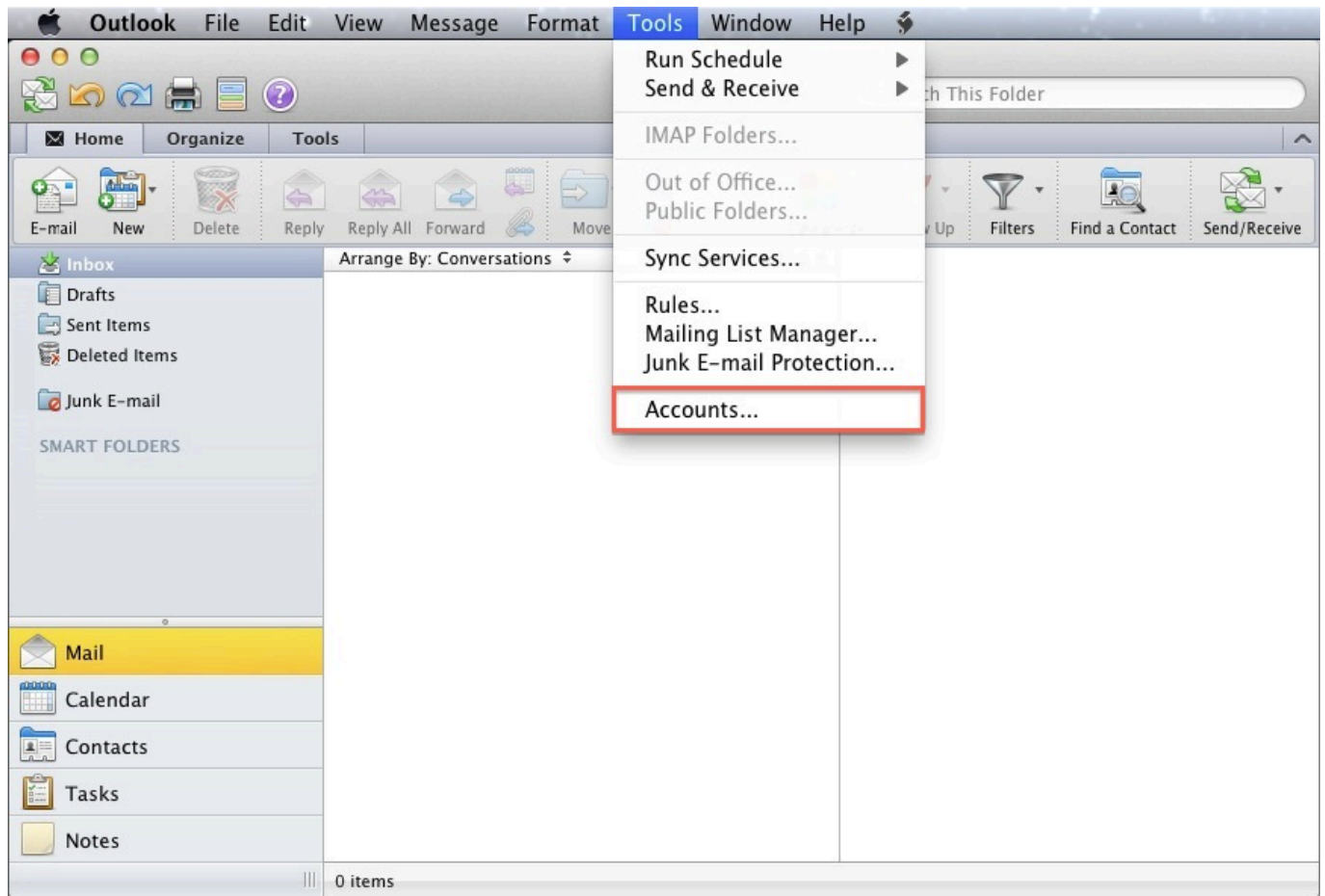
9. Paspauskite mygtuką **Add Account**.

Kai el. dėžutė bus sukurta, jums reikės dar įgalinti SMTP autorizaciją.

10. Atidarykite **Tools** meniu.

11. Paspauskite **Accounts**.

# Elektroninis paštas



12.Paspauskite **E-mail Account**.

13.Paspauskite **More options...** mygtuką.



# Elektroninis paštas

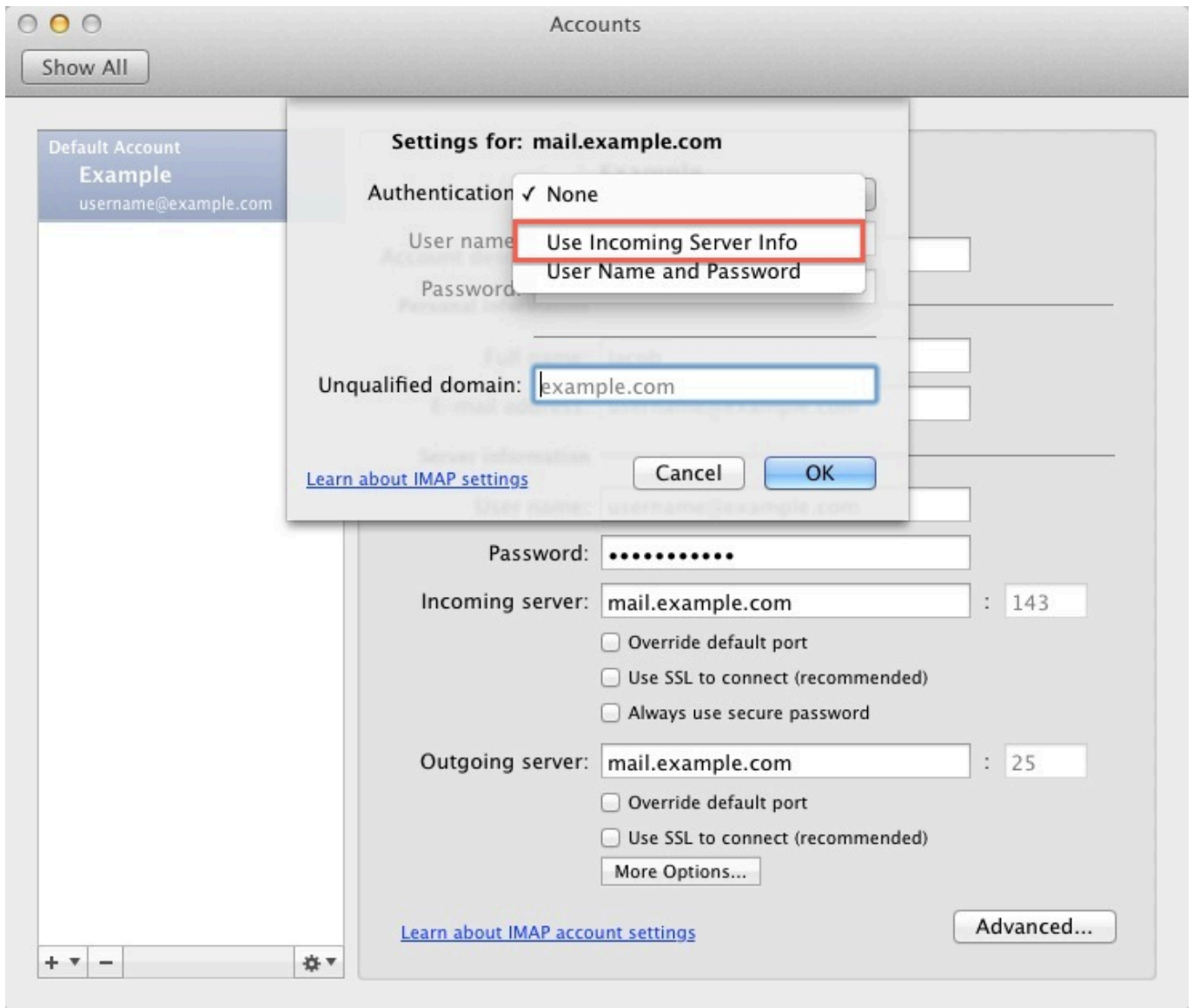
The screenshot shows the 'Accounts' window with a 'Show All' button at the top left. On the left side, there is a sidebar with a 'Default Account' section containing 'Example' and 'username@example.com'. The main area is titled 'Example IMAP Account' and contains the following fields and options:

- Account description: Example
- Personal information:
  - Full name: Jacob
  - E-mail address: username@example.com
- Server information:
  - User name: username@example.com
  - Password: [Redacted]
  - Incoming server: mail.example.com : 143
    - Override default port
    - Use SSL to connect (recommended)
    - Always use secure password
  - Outgoing server: mail.example.com : 25
    - Override default port
    - Use SSL to connect (recommended)
    -

At the bottom, there is a link for [Learn about IMAP account settings](#) and an 'Advanced...' button.

14. **Authentication** iškrentačiame meniu pasirinkite **Use Incoming Server Info**.

# Elektroninis paštas



15.Paspauskite **Ok** mygtuką.

Outlook 2011 parengtas el. pašto siuntimui ir gavimui.

Unikalus sprendimo identifikatorius: #1009

Autorius: vip

# Elektroninis paštas

Paskutinis atnaujinimas: 2015-06-09 10:20